

ALTAIR Software Suite

Real-Time Checkout and Post Process Application



Standalone PCM Chapter 10 UDP Packet receiver or archive playback file inputs.

ULYSSIX 
TECHNOLOGIES, INC.

Where Technology Soars
www.ulyssix.com

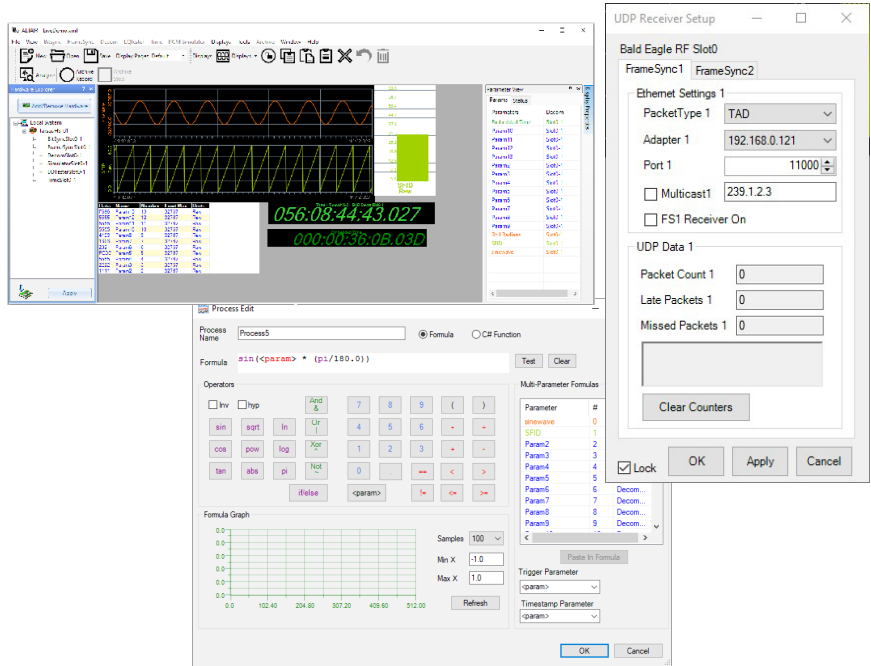


ALTAIR Software Suite

The Ulyssix ALTAIR Software Suite is fully written and supported in the USA. The ALTAIR integrated software is customizable to meet your telemetry data analysis needs. The standalone software suite supports PCM Chapter 10 UDP Ethernet packet inputs, which feed directly into ALTAIR's graphical data displays as well as the ability to archive the data for post mission analysis and/or export to external user software suites in Matlab or CSV format.

ALTAIR Software Suite Features Included:

- PCM Chapter 10 UDP data file or Ethernet packets inputs
- Chapter 7 packet telemetry processing
- IRIG 218 TMoIP packet reception and transmission
- Tarsus Archive Data (.tad) Files
- Software frame synchronization and PCM Chapter 4 decommutation
- Decom parameter graphical display and export
- Custom Data and Math Processes
- Multi-page displays with single key hit selection



User Configured, Fully Customizable

The ALTAIR Software Suite supports Post Analysis Processing of TAD files, Chapter 10 files, and Chapter 10 UDP streams using graphical data displays. The Frame Sync Statistics and Data Quality Metric provide analysis of the signal quality-based Frame Lock and Subframe Lock. ALTAIR exports decommutated parameters from previously archived data in multiple file formats (CSV, MATv7.3, HDF5, etc.). ALTAIR runs in a Windows 7, 10, and 11, 64-bit environment with easy-to-follow setup with fully editable display widgets.

When ALTAIR first starts, the software polls Windows to find a Ulyssix telemetry card or a license file. If the telemetry card is found, the license features available to the user are stored in FLASH memory on the card. If no Ulyssix telemetry card is found, the software searches for a stored license file. If no file is found, the software will run in DEMO only mode which allows the user to setup ALTAIR .xml setups only.

***Specifications are subject to change without notice.**
Revised: January 24, 2025

39763 Rivers Edge Lane
Lovettsville, VA 20180
telemetry@ulyssix.com
(p) 301.846.4800

